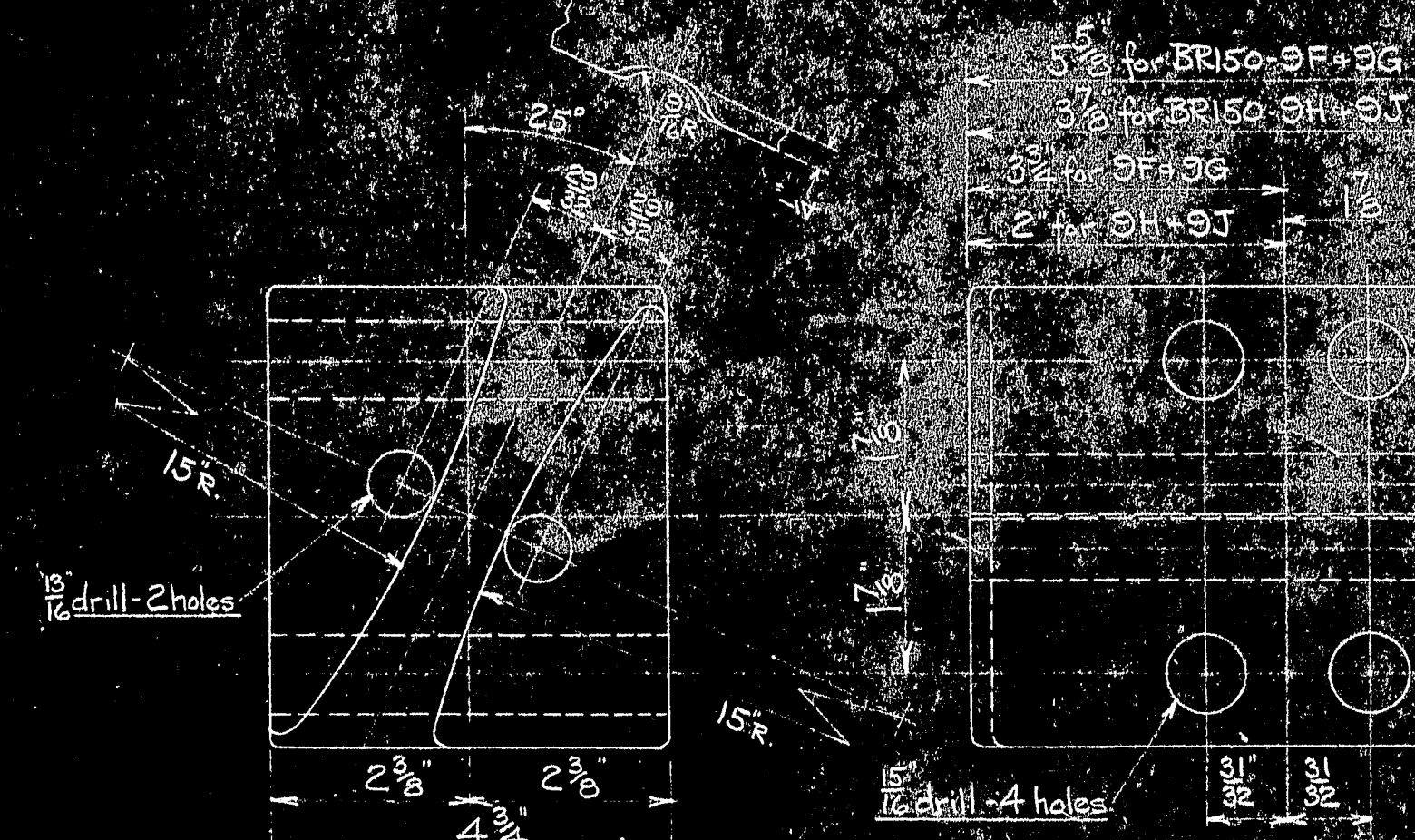
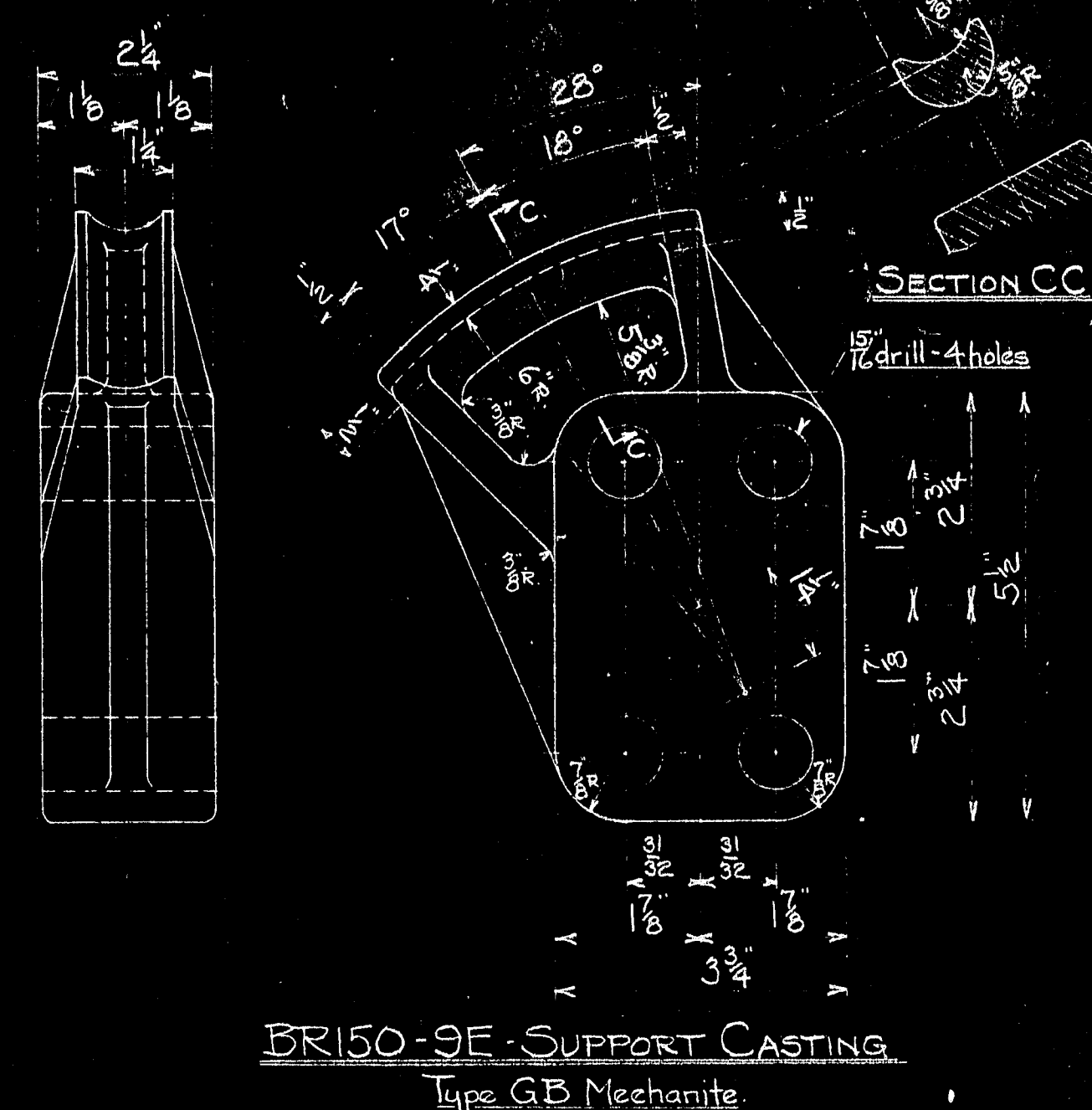


SUPPORT "C" FOR 1/4 BRIDGE CABLE STAYS AT P.P. 15-16-18 and 19



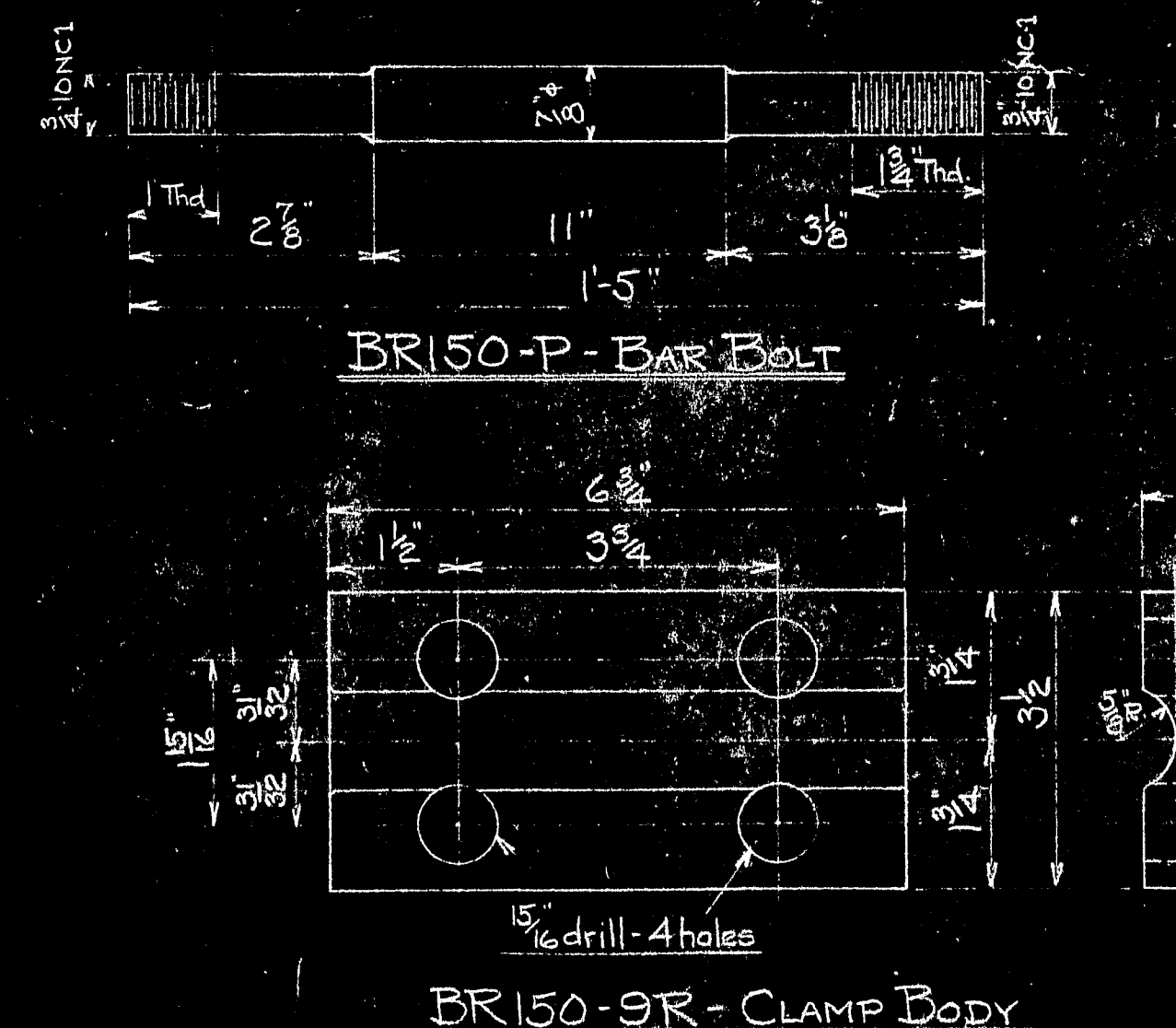
1" Extra Strong Pipe

2" for BR150-9K
3" for BR150-9L
7" for BR150-9M
8" for BR150-9N

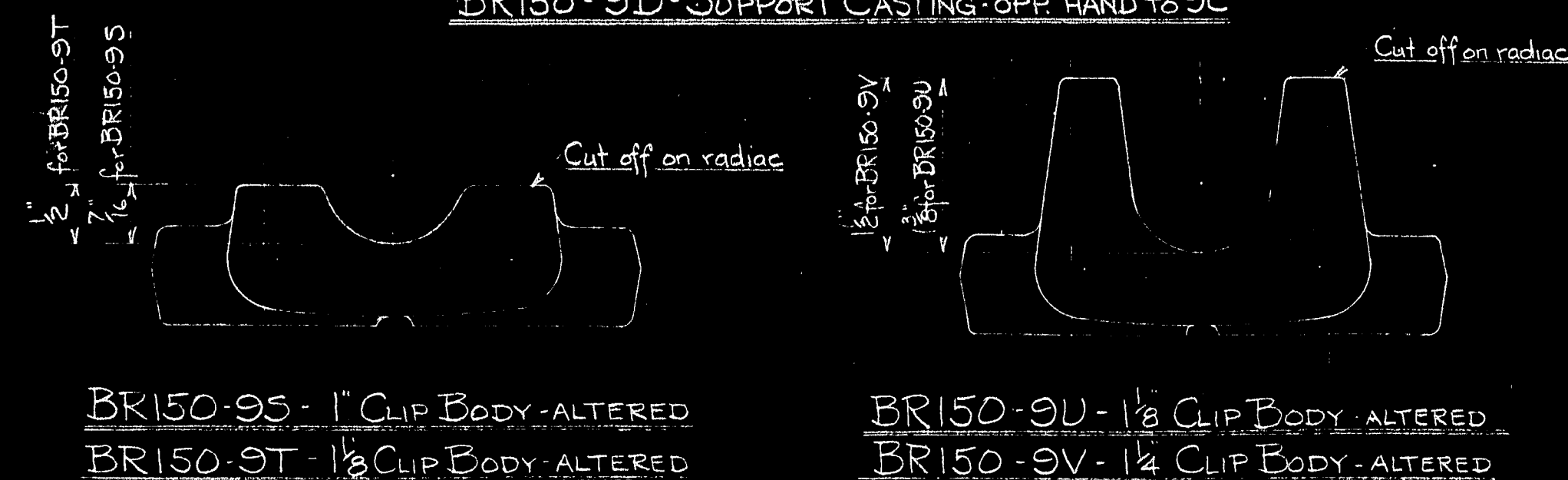
Square ends

BR150-9K - SPACER - 2" LG
BR150-9L - SPACER - 3" LG
BR150-9M - SPACER - 7" LG
BR150-9N - SPACER - 8" LG

BRISO-2a1	544	-	2 Lock Washer - Galv.	
BRISO-2a1	544	-	2 Semi-finished Hex Nut - Galv.	
BRISO-9a	48	-	1 Elastic Stop Nut #42U143	
BRISO-9a	360	-	1 Elastic Stop Nut #42U120	
BRISO-9a1	24	-	Std. U-Bolt for 1/2 Rope Clip - Galv.	
BRISO-9a2	24	-	Std. U-Bolt for 1/2 Rope Clip - Galv.	
BRISO-9a3	24	-	2 10 Hex Hd Bolt - 6 1/2 lg. No Nut - Galv.	
BRISO-9a4	16	-	3 1/2 10 Hex Hd Bolt - 8 lg. No Nut - Galv.	
BRISO-9a5	152	-	2 Bolt - 6 lg. Nut + Lock Washer	
BRISO-9a6	500	-	1 Bolt - 4 1/2 lg. Nut + Lock Washer	
BRISO-92	16	-	2 Clamp Body Assembly - Galv.	
BRISO-9Y	8	-	2 Clamp Body Assembly - Galv.	
BRISO-9X	48	-	2 Clamp Body Assembly - Galv.	
BRISO-9W	40	-	2 Clamp Body Assembly - Galv.	
BRISO-9V	24	Steel	1/2 Clip Body - Altered - Galv.	
BRISO-9U	24	Steel	1/2 Clip Body - Altered - Galv.	
BRISO-9T	272	Steel	1/2 Clip Body - Altered - Galv.	
BRISO-9S	20	Steel	1" Clip Body - Altered - Galv.	
BRISO-9F	112	Steel	2 Clamp Body	Galv. after assembly
BRISO-9E	272	Steel	2 Bar Bolt - Galv.	
BRISO-9N	64	Pipe	2 Spacer	Galv. after assembly
BRISO-9M	32	Pipe	2 Spacer	" "
BRISO-9L	132	Pipe	2 Spacer	" "
BRISO-9K	160	Pipe	2 Spacer	Galv. after assembly
BRISO-9J	6	See Note	2 Support Casting - Galv.	Opp. hand to 9H
BRISO-9H	6	"	2 " " "	As shown
BRISO-9G	4	"	2 " " "	Opp. hand to 9F
BRISO-9F	4	"	2 " " "	As shown
BRISO-9E	24	"	2 " " "	
BRISO-9D	4	"	2 " " "	Opp. hand to 9C
BRISO-9C	4	"	2 " " "	As shown
BRISO-9B	8	"	2 " " "	Opp. hand to 9A
BRISO-9A	8	See Note	2 Support Casting - Galv.	As shown



BR150-9R-CLAMP BODY



BR150-9K for BR150-9N
 BR150-9L for BR150-9K
 BR150-9M for BR150-9J
 BR150-9N for BR150-9Z

Seal Weld
 Water-tight

BR150-9F

Spacers must be accurately centered over holes in Clamp Body

BR150-9W - CLAMP BODY ASSEMBLY
BR150-9X - CLAMP BODY ASSEMBLY
BR150-9Y - CLAMP BODY ASSEMBLY
BR150-9Z - CLAMP BODY ASSEMBLY

		BILL OF MATERIAL JOHN A. ROEBLING'S SONS CO., TRENTON, N. J. <small>100 SOUTH 4TH STREET, TRENTON, N. J.</small>		DEER ISLE BRIDGE REINFORCEMENT <small>100 SOUTH 4TH STREET, TRENTON, N. J.</small> ASSEMBLY AND DETAILS OF SUPPORT FOR LONGITUDINAL AND TRANSVERSE STAYS	
		CWD General Revisions CWD Approval, Date Added CWD Redrawn BY REVISIONS APPROVED ROBINSON AND STEINMAN MARCH 16 1944	2/23/44 3/7/44 3/10/44 DATE	SCALE 3/4" = 1'-0" DES DR 2/10/44 3/10/44 TR CH ENG'R	SERIAL B1510 9
BR150-10 Location of Supports BR150-6 Longitudinal Stays BR150-4 Transverse Stays DWG. NO. TITLE	REFERENCE DRAWINGS				

